

Pulpmatic Uno Waste Height

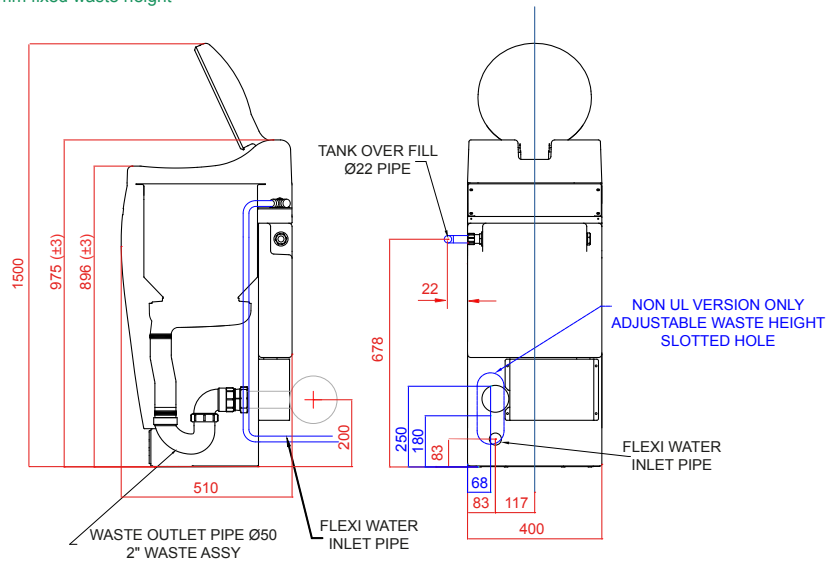


UL approved = 200mm fixed waste height

Non UL approved

250 mm Maximum
200 mm Nominal
180 mm Minimum

to centre of pipe



Pulpmatic Uno : Product Data



Hands free operation



DDC Dolphin Ltd
The Fulcrum, Vantage Way, Poole, Dorset BH12 4NU
tel: +44 (0) 1202 731555 | fax: +44 (0) 1202 731666
info@ddcdolphin.co.uk

www.ddcdolphin.co.uk

DDC Dolphin, Pulpmatic, Panamatic, Incomatic, Hygenex, MicrobeSafe are Registered Trademarks

DDC Pulpmatic Uno

Compact macerator for single medical pulp items designed for low use areas

The Pulpmatic Uno is a compact pulp macerator with capacity for 1-2 pulp items per cycle of 65 seconds. Developed for low demand areas of single bed wards and en-suite facilities, the Pulpmatic Uno is ideal for these situations with its compact size, low noise and extremely low water and electricity consumption.

Patented Hands Free Operation - The Pulpmatic Uno uses our patented totally hands free technology offering completely hands free operation by means of a foot cup at the base of the machine and an optical sensor to close and start the machine. This makes it not only more convenient, but also more hygienic to use than other macerators and greatly reduces the potential for cross contamination.

Efficient and Economical - The Pulpmatic Uno offers greater efficiency, made possible by the unique design features including the seven-blade maceration disc allowing faster and quieter operation. Not only does this help you cope better with workload peaks, but it translates into significant operating cost savings in terms of staff time and of water and electrical consumption per cycle.

Automatic disinfection - The automatic disinfection dosing option will cleanse the drum after each cycle to meet EN1276 and EN13697 standards eliminating spores of up to 99.999% of major HCAI's.

Easy service programme – Service support is provided by our own specialist and highly skilled engineers and we offer a choice of fully comprehensive service contracts focused on individual customer needs.



MicrobeSafe®
Antimicrobial Surface

Key Features

Patented hands free open and close operation

Dual antimicrobial action

Automatic disinfection

Compact size

Efficient and economical

Environmentally friendly

Reduced water consumption

Easy to use

Easy to install

Easy service programme

Due to a policy of continuous development and improvement the right is reserved to supply products which may differ slightly from those described in this brochure

General	
Stainless Steel grade:	304
Dimensions: w x h x d	400 x 975 (±3) x 510 mm
Weight:	Dry 55kg
Capacity:	1-2 pieces medical pulp
Operation cycle time:	65 seconds
Decibel rating:	58.9 dba
Electrical	
Voltage: 110V	60Hz dedicated 15A breaker (UL version)
Voltage: 230V	50Hz dedicated 13A breaker
Voltage: 230V	60Hz dedicated 13A breaker
Voltage: 415V	50Hz 3Ph + Neutral & Earth, 16A
Cable connection: 230V	3 core sheathed x 1.5mm ² , 2m long
Cable connection: 415V	N/A
Circuit Protection:	30mA RCD, GFI, IEC60364 compliant
Rated power input:	0.8kW
Electrical consumption per cycle:	0.005kW
Steam generator power:	N/A
Motor power:	0.75kW
Pump power:	0.125kW
Water	
Water connection:	¾" BSP male fittings required
Water pressure:	Cold water ¾" 0.5-10 bar
Water flow rate (Min):	5 Litres per minute at 1 bar
Water tank capacity:	15 Litres
Water consumption per cycle:	9.5 Litres
Waste connection:	N.B. 50mm (2")
Overflow connection:	22mm
Disinfection	
Recommended disinfection detergents:	EcoCleanse+
Disinfection tank volume: (external)	5 Litres
Disinfection dosing per cycle:	13 Millilitres